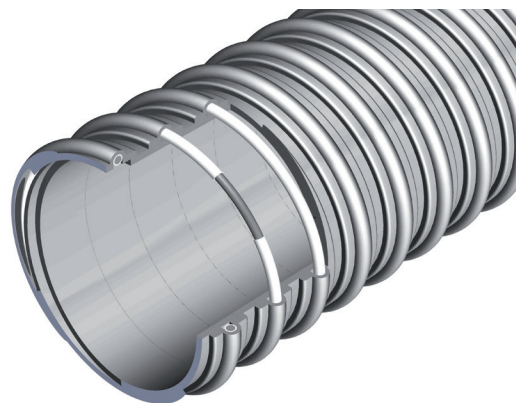


P3 LF

Heavy weight and flexible PVC ducting PVC-coated spring steel wire

Gaine flexible et lourde en PVC renforcée d'une spire acier gainée PVC










Structure: Flexible heavy weight ducting made out of soft PVC wall, reinforced with spring steel wire PVC coated. Steel wire for grounding.

Applications: Designed for ventilation, suction of gases, fumes, fibers and dust handling, cable protection, transport of liquid without pressure.



Structure : Gaine flexible lourde faite d'une paroi en PVC souple , renforcée d'une spirale en acier gainée PVC. Spirale d'acier de mise à la terre.

Applications : Conçue pour ventiler, aspirer gaz, fumées, fibres et transport de poussières, protection de câbles, vidange de liquides.

						
int mm	kg/m	mm	mm	bar	bar	m
20	0,220	1,20	30	2,40	0,85	10
30	0,360	1,20	45	2,20	0,80	10
40	0,410	1,20	60	2,10	0,60	10
50	0,590	1,20	75	1,90	0,40	10
60	0,700	1,20	90	1,60	0,35	10
70	0,820	1,20	105	1,30	0,30	10
80	0,940	1,20	120	1,20	0,30	10
100	1,280	1,20	150	1,00	0,25	10
120	1,450	1,20	180	0,85	0,25	10
125	1,600	1,20	185	0,75	0,20	10
150	1,950	1,50	225	0,50	0,18	10
175	2,280	1,50	260	0,35	0,16	10
200	2,600	1,50	300	0,30	0,15	10
250	3,730	1,50	375	0,20	0,12	10
300	4,470	1,50	450	0,15	0,10	10
350	5,220	1,50	525	0,10	0,09	10
400	5,960	1,50	600	0,10	0,08	10
450	6,710	1,50	675	0,08	0,06	10



Printing | Marquage :

S5 PVC L M1 n°lot

Temperature | Température :

0 / + 70 °C
+ 32 / + 158 °F

Properties | Caractéristiques :

Smooth bore, good flexibility, solid construction
Intérieur lisse, fortes dépressions admissibles

Colors | Couleurs :

